



9/404 Mona Vale Road St Ives NSW

3 2 2

The Tulip Garden sits in an enviable position within Sydney's highly regarded Upper North Shore. This Villa is only a stone's throw away from Garigal National Park and Ku-ring-gai Wild Flower Garden.

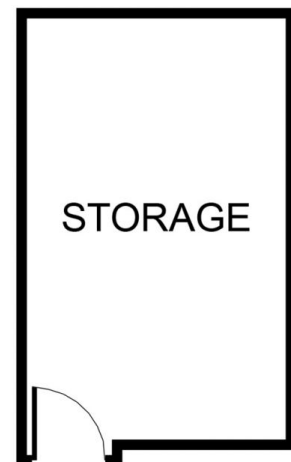
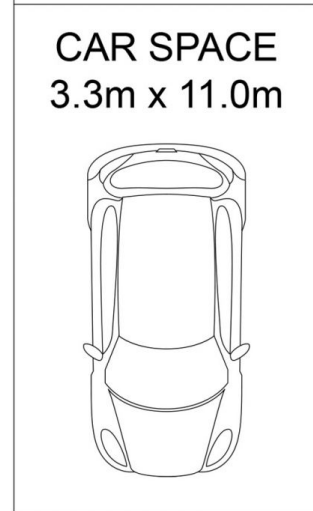
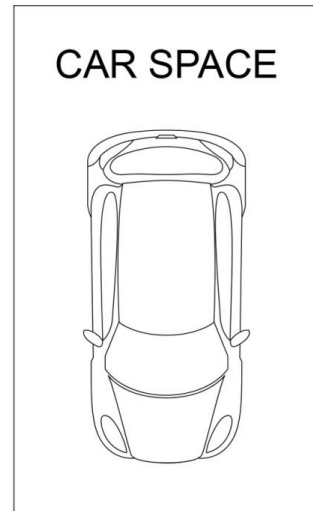
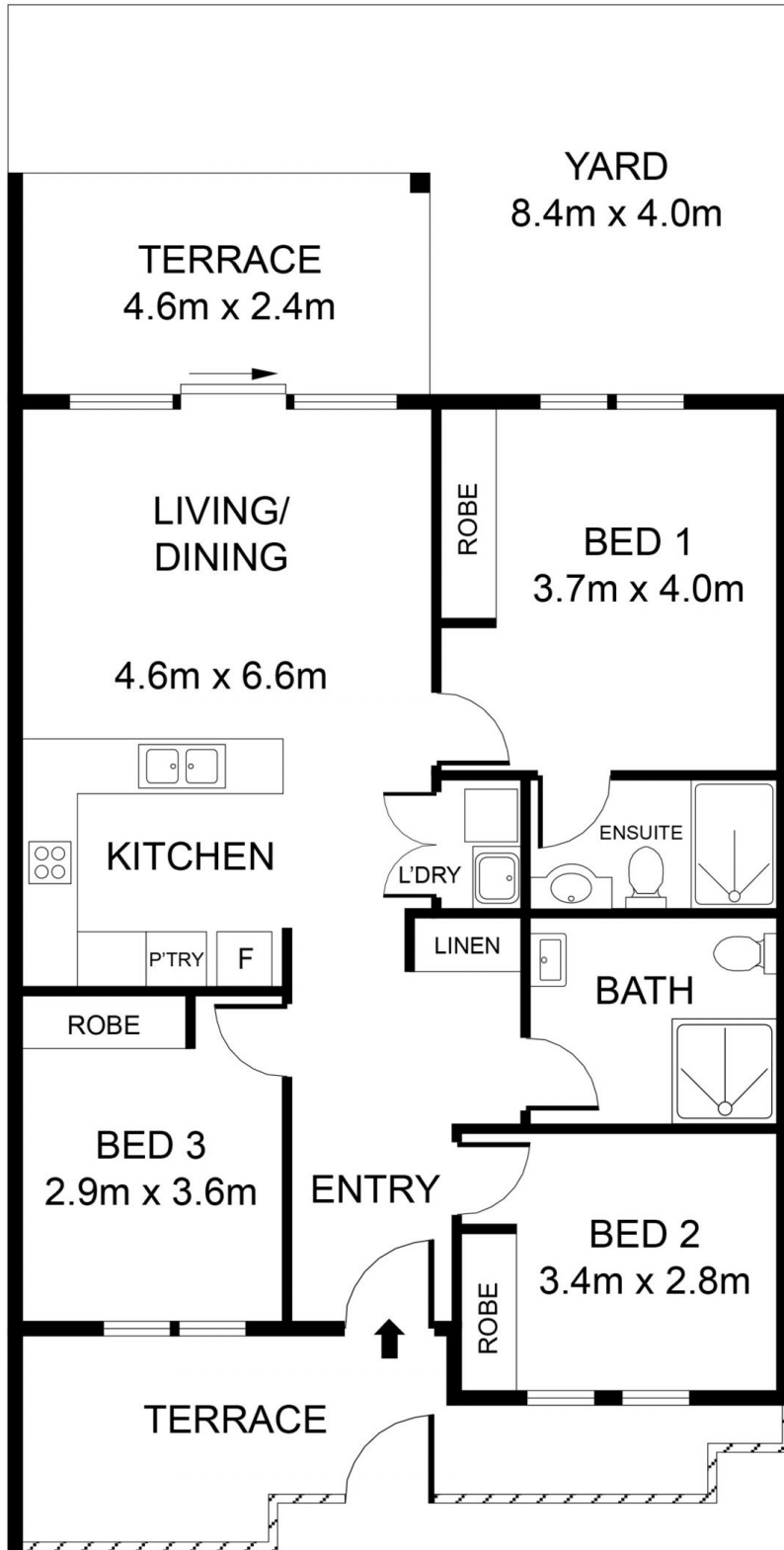
View : <https://www.assetrealty.com.au/lease/nsw/north-shore-upper/st-ives/residential/villa/7335910>

Highlights:

- Generous entertaining spaces, BBQ area with Courtyard
- Bright and sunny North facing aspect. Downsizer - Senior Living
- Spacious patios take full advantage of its peaceful surrounds
- Gourmet open plan kitchen featuring stainless steel appliances
- Fully tiled bathrooms include a floating vanity and frameless shower screen
- Ducted reverse cycle air conditioning
- Secure basement parking with lift access



Margaret Matthews
02 9498 7799



10/404 Mona Vale Road, St Ives

Residence Area: 129 sqm
 Parking Space: 38 sqm
 Storage Area: 21 sqm
 Total Area: 188 sqm

DISCLAIMER: 3D Property View accepts no liability for the accuracy of details contained within our floor plans. All plans are drawn and also checked to the best of our ability, however information contained in our floor plans such as area calculations are approximate, and have not been surveyed or drawn to scale. Our floor plans are for representational purposes only and should be used as such. Do not attempt to refer to our floor plans for structural or detailed information.