



## 14/36-40 Culworth Avenue Killara NSW

1 1 1

Spacious Apartment in premium Location - Walk to Rail  
Spacious one bedroom apartment for those seeking a leafy luxurious lifestyle. There are Cafe's, Tennis and Golf clubs, Theaters and a Train station within the locale making this property your social hub. The Kitchen comes fully equipped with gas cooking, stone benchtops and plenty of storage. This property is 200m approx. from Killara train station.

### Summary Features include:

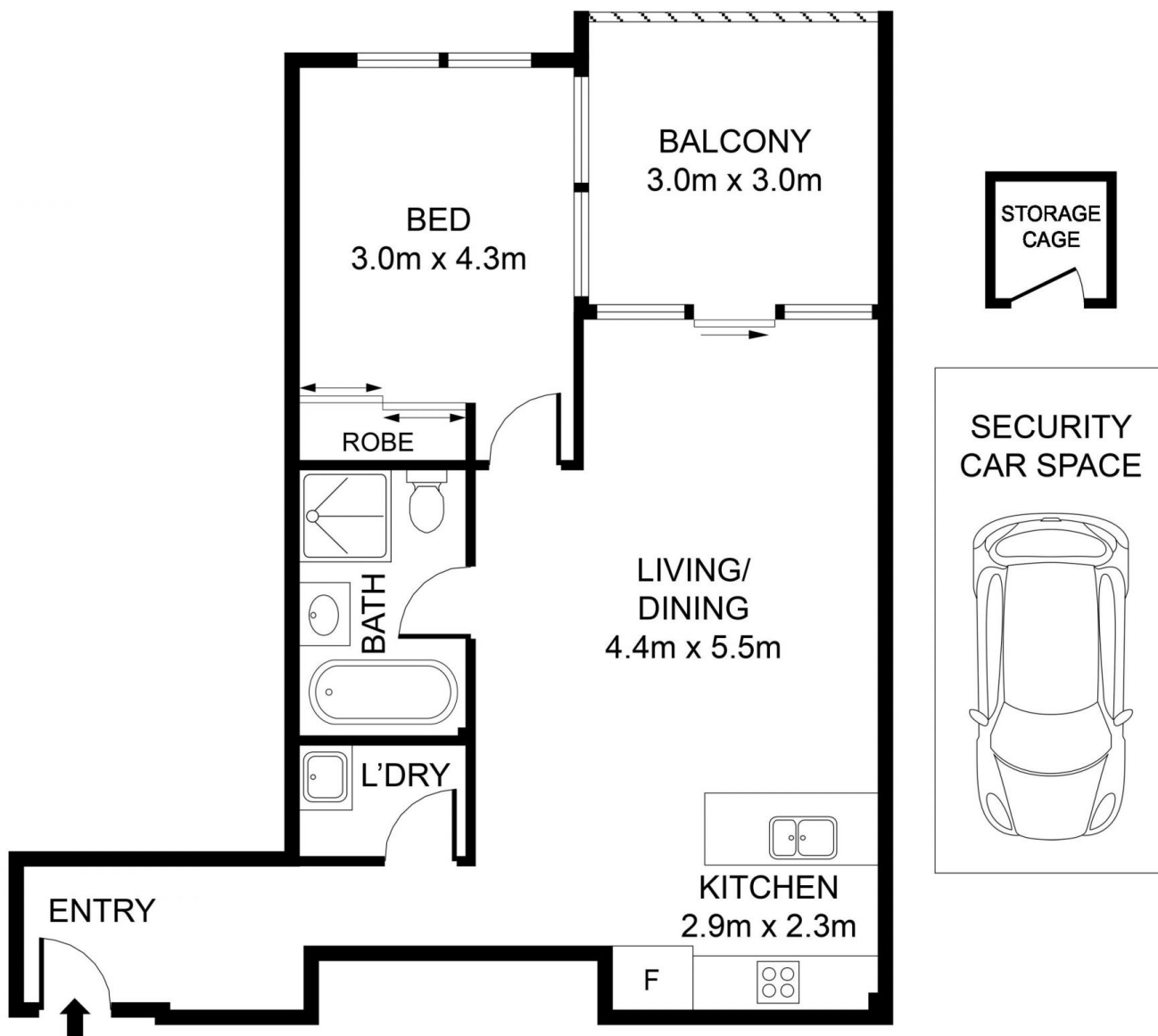
- \* Spacious living and dining room with floor to ceiling glass flow to covered balcony
- \*Block A, Level 1 with lift access.
- \*Modern free-standing bath & shower and Laundry with dryer
- \*Gas Kitchen features with European stainless steel appliances
- \*Ducted reverse cycle air-conditioning and Gas bayonet

**View :** <https://www.assetrealty.com.au/lease/nsw/north-s-hore-upper/killara/residential/apartment/7860977>



**Christine Sheridan**  
02 9498 7799

**Sima Akbarian**  
02 9498 7799



LEVEL ONE BLOCK A



INTERNAL AREA + BALCONY: 69 SQM  
 CAR SPACE: 14 SQM  
 TOTAL AREA: 83 SQM

**14/36-40 Culworth Avenue, Killara**

**ASSET**  
*reality*

DISCLAIMER: 3D Property View accepts no liability for the accuracy of details contained within our floor plans. All plans are drawn and also checked to the best of our ability, however information contained in our floor plans such as area calculations are approximate, and have not been surveyed or drawn to scale. Our floor plans are for representational purposes only and should be used as such. Do not attempt to refer to our floor plans for structural or detailed information.