

1/6 Womerah Street Turrumurra NSW

3 1 2

Exquisite two bedroom plus study room townhouse!

This light filled two bedroom plus study townhouse with 3 levels is located approximately 650 meters to Turrumurra station and stroll to local cafes, restaurants, schools and parks.

Features include:

- 2 generous sized bedrooms, both with built-ins
- Study or 3rd bedroom
- Modern kitchen with stone benchtops, gas cooking and Bosch appliances
- Open plan living area with timber flooring
- Main bathroom plus a powder room
- Internal laundry and ample storage space
- Low maintenance garden
- Outdoor courtyard great for entertaining

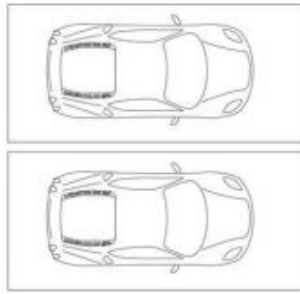
View : <https://www.assetrealty.com.au/lease/nsw/north-hore-upper/turrumurra/residential/townhouse/7945347>



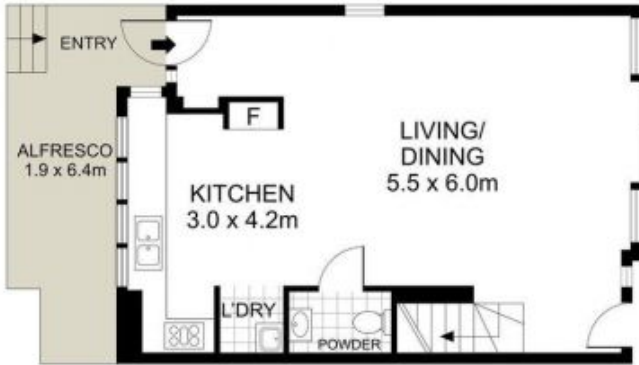
Raymond Chen
0468 997 811

Internal area: 103.61 m²
Stairs area: 2.8 m²
External area: 38.52 m²
Garage area: 28.92 m²
Total area: 173.8 m²

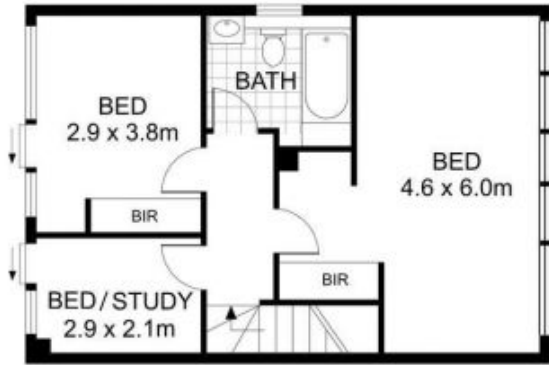
STORAGE
CAGE



DOUBLE
CARSPACE



ENTRY LEVEL



SECOND LEVEL



1/6 WOMERAH STREET, TURRAMURRA

PLANS SHOWN ONLY INDICATIVE OF LAYOUT. DIMENSIONS ARE APPROXIMATE.
Measurements are approximate and not to scale. The vendor, agency and supplier will accept no liability for its accuracy. Interested parties are advised to make their own independent enquiries.