



94 Koola Avenue East Killara NSW

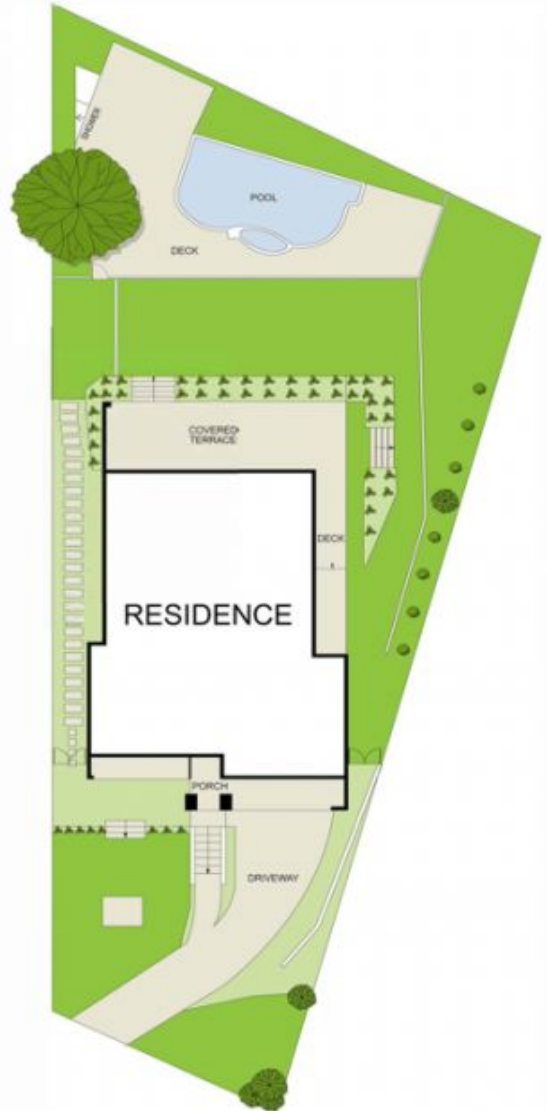
6 4 2

Straight out of the pages of a high-end lifestyle magazine, this opulent entertainer is the pinnacle of sophisticated contemporary living. Positioned in the esteemed east side of Killara, its exclusive address merges seamlessly with a resort-inspired lifestyle of unparalleled luxury. An as new architectural marvel, newly re-imagined to surpass the expectations of even the most discerning buyers, luxury materials and meticulous attention to detail ensure perfection both indoors and out. Set across a magnificent 1117 sqm level block and marvelous 416 sqm internal, showcased by its flawless design and framed peacefully by sunset-district panoramas and landscaped gardens, revel in the convenience of a leisurely stroll to the esteemed Killara High School, station buses, Koola Oval, parks, and local shops. Zoned for Lindfield East Public School and only moments to Pymble Ladies' College, Ravenswood, Knox, and other leading institutions, this is upper north

Price : Auction (Unless Sold Prior)
Building Size : 416 sqm
Land Size : 1117 sqm
View : <https://www.assetrealty.com.au/sale/nsw/north-shore-upper/east-killara/residential/house/8003884>



Anna Chow
02 9498 7799



TOTAL FLOOR SIZE: 502 m²
 INTERNAL SIZE: 416 m²
 EXTERNAL SIZE: 86 m²
 LAND SIZE: 1117 m²



94 Koola Ave, East Killara

ASSET
reality

DISCLAIMER: 3D Property View accepts no liability for the accuracy of details contained within our floor plans. All plans are drawn and also checked to the best of our ability, however information contained in our floor plans such as are calculations are approximate, and have not been surveyed or drawn to scale. Our floor plans are for representational purposes only and should be used as such. Do not attempt to refer to our floor plans for structural or detailed information.